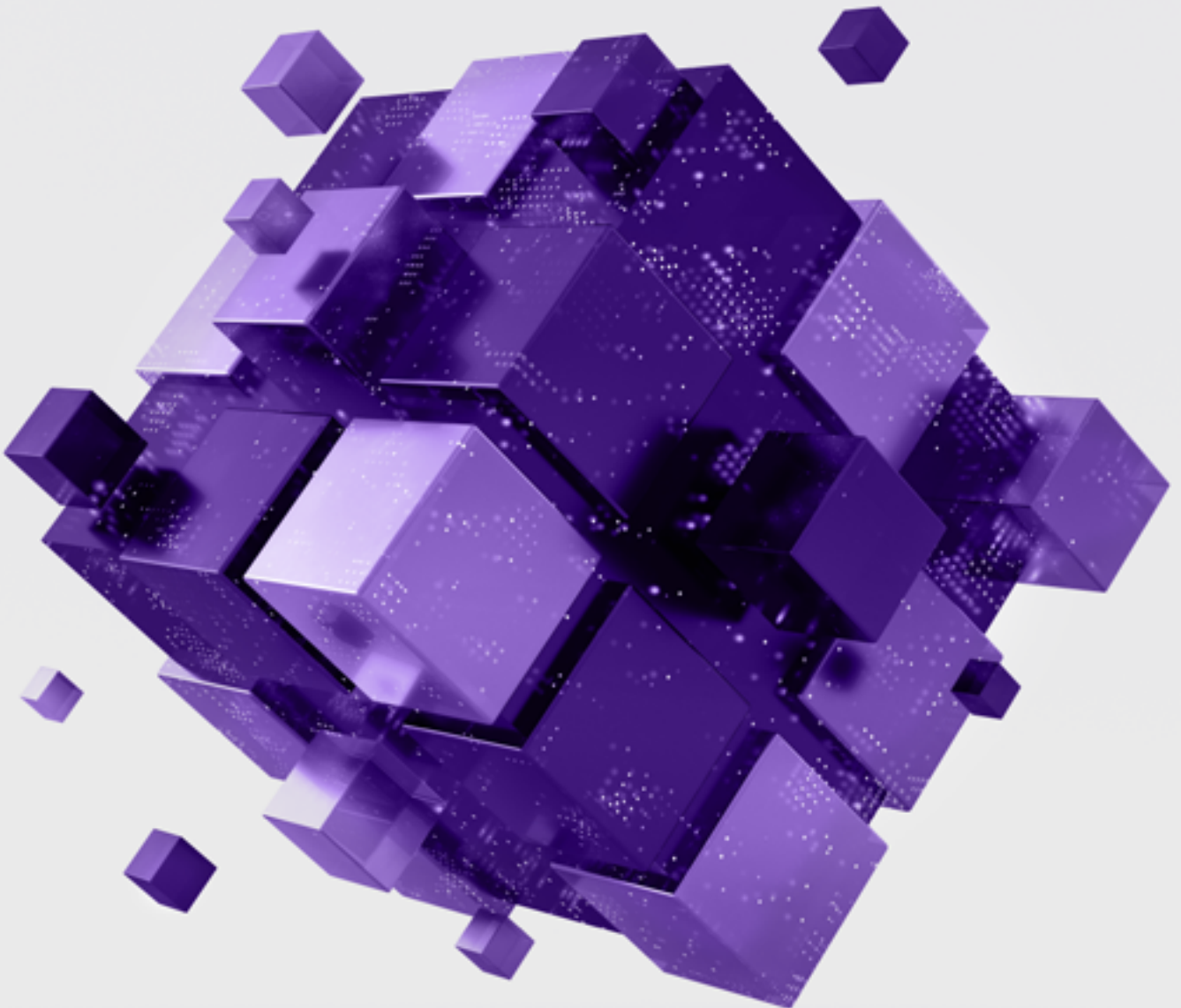


ALCEA Total Solution  
**secure what  
matters most  
seamlessly.**

From keyless access and real-time monitoring to integrated systems and expert support, ALCEA's Total Solution keeps your critical infrastructure uninterrupted.



# contents

<b>introduction</b>	<b>04</b>
We're here to secure the most critical industry: yours.	
<b>ALCEA's solution</b>	<b>06</b>
Optimal security and lasting peace of mind.	
<b>features &amp; flexibility</b>	<b>08</b>
Tailored to your needs.	
<b>core benefits</b>	<b>10</b>
One vendor, one security ecosystem.	
<b>real-world impact</b>	<b>12</b>
Simple or complex, always adapted.	
<b>how it works</b>	<b>14</b>
ALCEA Total Solution in action.	
<b>the future</b>	<b>16</b>
Evolving with your operations.	
<b>let's get started</b>	<b>18</b>
Transform your security today.	





## Introduction

**we're here to  
secure the most  
critical industry:  
yours.**

Societies thrive when critical infrastructure operates uninterrupted. ALCEA exists to protect critical infrastructure globally and ensure businesses and people are safe and secure. Our solutions have been adapted across industries like telecommunications, transportation, energy, water, mining, oil and gas.

### **Are you looking for the missing piece to your security puzzle?**

Whether you need a specific security product or a fully integrated system – spanning access control, security management software, video management, intrusion detection, key management, and more – we'll tailor a future-ready solution to fit your needs. With our support, your people, your facilities and the society stay safe. Now and in the future.

ALCEA Total Solution helps you overcome fragmented systems, manual processes, and security blind spots. It's designed to solve real-world challenges: ensuring compliance, streamlining operations, and keeping your infrastructure running smoothly.

## ALCEA's solution

# optimal security and lasting peace of mind.

We use deep industry understanding and collaborative approach to handle everything from initial assessments and analysis to identifying your specific needs. Our sector specialists are dedicated to securing critical infrastructure and tailor, design and develop the digital or physical security solution adapted to your operational requirements.

### Save time and money

Let us optimize a solution that not only overcomes your challenges but aligns security and safety measures with operational needs and your budget constraints.

### Protect hazardous areas, chemicals and machinery

We can cover every security layer you have from highly restricted areas to transportation to prevent health and environmental risks and to reduce theft.

### Tailored to fit your ecosystem

These solutions are tailored not only to your sites but also designed to integrate seamlessly with your existing security ecosystem and workflows.

### Secure remote, unmanned and spread-out locations

We can give you peace of mind that everyone and everything is where they should be. Manage access so the right people are in the right place when needed.

### Control access for employees and subcontractors

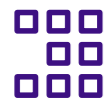
With our remote access management solutions you can protect the Constant flow of employees, contractors and subcontractors moving in your facilities.



## Features & flexibility

# tailored to your needs.

Your infrastructure, your rules. Our portfolio spans mechanical to digital solutions, helping you transition smoothly to future-ready security.



### Modular design

Build step by step, combining mechanical, electromechanical, and digital components. Use your existing systems or start fresh, improve your system at your own pace.



### Real-time monitoring & audit trails

Monitor sites remotely with instant alerts, full traceability, and complete visibility into access and events. Stay informed and in control.



### Multi-technology access

Manage mechanical keys, electromechanical solutions, and keyless access within one integrated ecosystem. Everything works together seamlessly.



### Services

Full assistance and expertise of our professionals in pre-sales advice, providing an audit of the needs of sensitive sites and a personalized proposal based on your individual operations and needs.

## one total security solution or the missing piece.

ALCEA's Total Solution connects all your security modules – from access control to video management – into one integrated ecosystem, managed through ALWIN.



### Access control

Easy creation and management of access rights to one or multiple sites, including remotely located on different continents and time zones. Safe and efficient management of access, visits, and traceability – including locks, padlocks, and electromechanical solutions.



### Intrusion detection

To prevent and limit intrusion attempts, the ALWIN solution includes a detection module to enhance security and accelerate reactivity in case of emergency, intrusions, or breakdowns. A centralized alarm system reports immediately malfunctions via SMS or email to the operators.



### Key management

A range of key cabinets designed by ALCEA simplifies and secures access to various resources, including highly sensitive ones, shared between company employees and subcontractors.



### Visitor & subcontractors management

Our visitor management module secures and streamlines the reception of visitors and subcontractors. It automates check-ins, badge creation, and access permissions, letting you define authorized areas and times. By validating and tracking visitor data, it boosts security and efficiency – ensuring a smooth, professional experience onsite.



### Video management

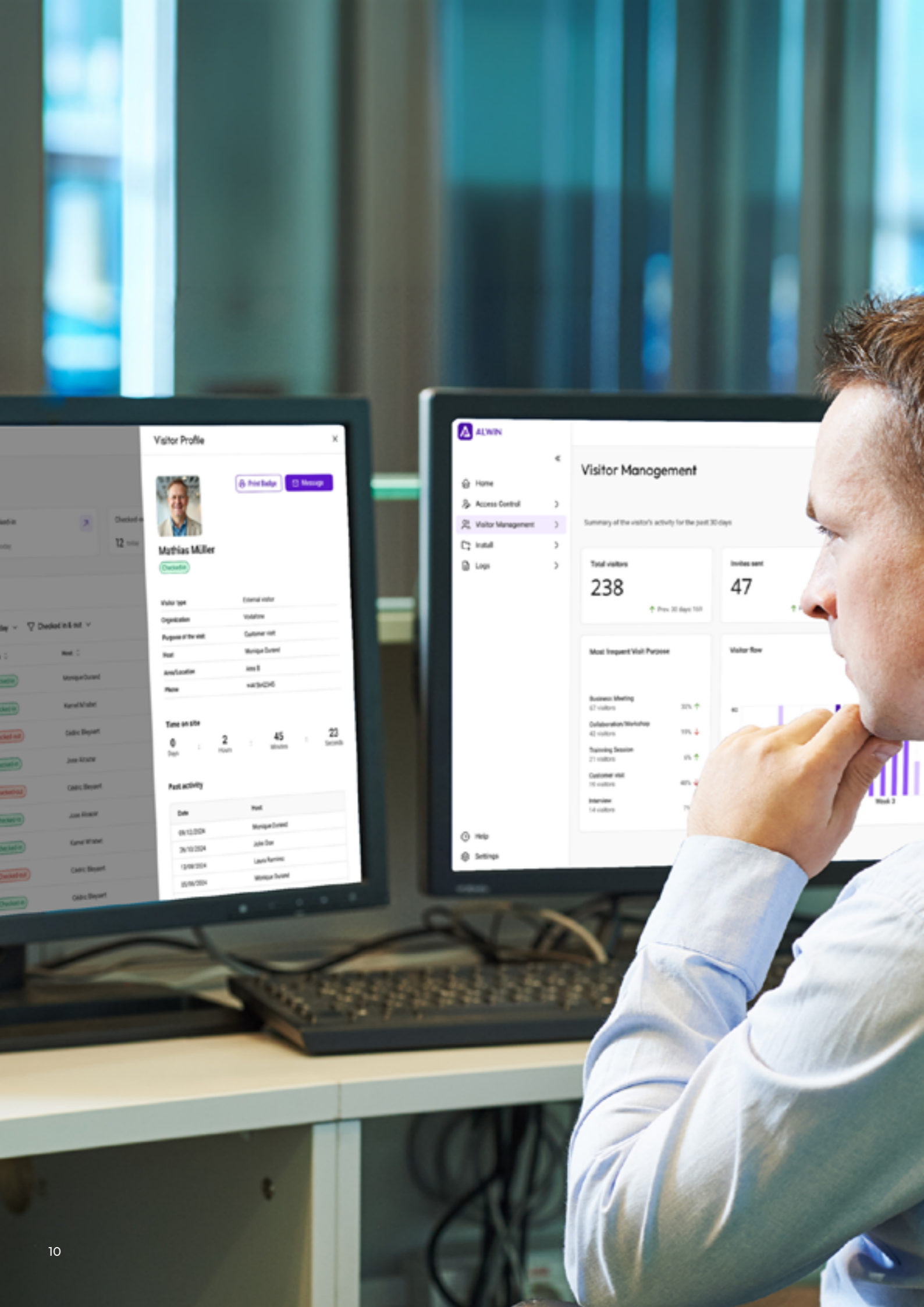
ALWIN maximizes site security by integrating video management systems. The software combined with compatible cameras monitor sites under the ALWIN Vision module.



### Integrations

ALWIN centralizes access control, visitor management, video management, intrusion detection, and key management in one place, streamlining your site's digital security management.





## Core benefits

# one vendor, one security ecosystem.

We're more than a provider – we're your partner in securing critical infrastructure. With ALCEA, you get a complete, integrated solution from one trusted source. One accountable partner for seamless delivery and support.

### Improved efficiency

Minimize interruptions to your operations and logistical workflow, while maintaining flexibility.

### Just what you need

A wide range of integrated security solutions combined with ALWIN – our modular, interoperable security management that adapts to your sites.

### Integrations

Bring together access control, security management software, video management, intrusion detection, key management, and more to build your total security solution.

### Cost savings

Remote security management saves your time and money, without compromising security and control.

### Future-proof

Get the security hardware and software you need now and in the future. Our solutions are sustainable and scalable over time.

### Compliance & standards

Meet regulatory requirements across industries and geographies.

## Real-world impact

# simple or complex, always adapted.

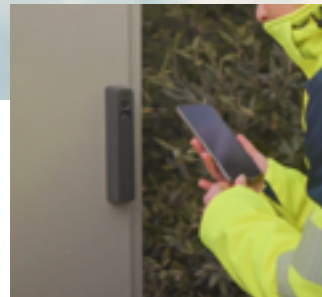
Every project has its own scale. Whether you need a fast, targeted deployment or a comprehensive multi-site rollout, ALCEA adapts to your reality - not the other way around.

### One solution. Flexible configurations for every site.

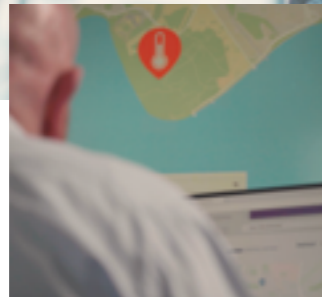
Whether you're securing a single site or managing a network across borders, ALCEA's Total Solution adapts to your needs – and integrates with your systems and workflows.

From a single cabinet to a continent-wide network, ALCEA tailors security to your operational reality - simple or complex. We speak your language. And with teams in 22 countries, we're present globally to support you wherever you operate.

Simple case:  
Energy example



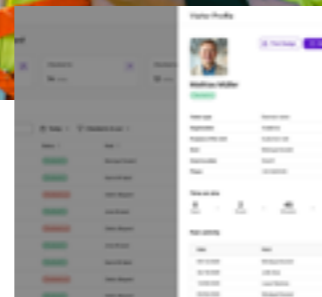
Cabinet with Swing Handle



Real-time alerts

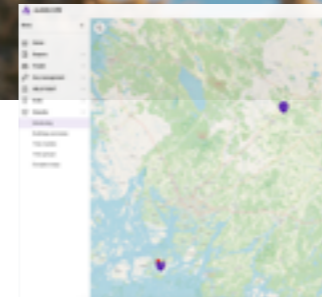


Mobile access via app



Audit trail dashboard

Complex case:  
Telco example



Map with distributed sites



ALWIN dashboard showing access logs, video feeds, intrusion alerts



Contractor credentialing flow



Integration with third-party systems

How it works

# ALCEA Total Solution in action.

Security that scales with you. Whether your challenge is local or global, simple or complex, ALCEA delivers adaptable security that grows with you.



A total solution designed around your needs — protection, convenience, and peace of mind.



## The future

# evolving with your operations.

Technology changes fast. So do we.

- ✓ **Future-proof design**  
Solutions that scale and adapt over time.
- ✓ **Continuous innovation**  
We actively incorporate customer feedback to evolve our solutions and stay ahead of emerging needs. From artificial intelligence and IoT to biometric integrations, we're developing what's next.
- ✓ **Global expertise, local support**  
With teams in 22 countries and decades of experience, we're here for the long haul.
- ✓ **Customer relationships that last**  
Our longest partnership in critical infrastructure spans over 40 years.



**ALWIN**  
Our security management platform unifies access control and monitoring in one simple solution. It integrates seamlessly with third-party systems for real-time visibility and alerts, while ALWIN's connected solutions provide strong, multi-layered cybersecurity and privacy protection.



**ABLOY CUMULUS**  
Provides premium security and situational awareness with future-ready, battery-powered keyless locking solutions for critical infrastructure. Use padlocks, swing handles, key deposits, or controllers to manage numerous electric locks.



**ALCEA GATEWAY**  
Enables remote monitoring and keyless access management. Connects locking components to centralized systems for real-time situational awareness and control. Compatible with the ABLOY CUMULUS portfolio for seamless integration.



**NETKEY key cabinet**  
Smart key management system that tracks, controls, and secures physical keys. Ideal for managing contractor access and shared assets.



**Visitor & subcontractors management**  
Manage contractors, subcontractors, and other visitors with smart solutions that prevent unauthorized entry.



**ASSA ABLOY mechanical, electromechanical & electronic range**  
Combine mechanical durability with digital flexibility. Manage access rights remotely and ensure compliance with industry standards.



**Third-party integrations**  
ALCEA's Total Solution supports integration with video management, intrusion detection, visitor management, and other systems to create a unified security ecosystem.



**InVue LIVE Padlocks and Cabinet Locks**  
Smart, NFC-enabled keyless access for high-security environments. These solutions combine convenience with robust protection, ideal for managing critical assets and sensitive areas.

## cybersecurity at the core of your **total solution**.

In today's world, physical and digital threats are no longer separate. That's why cybersecurity isn't an add-on – it's built into ALCEA's Total Solution from the start.

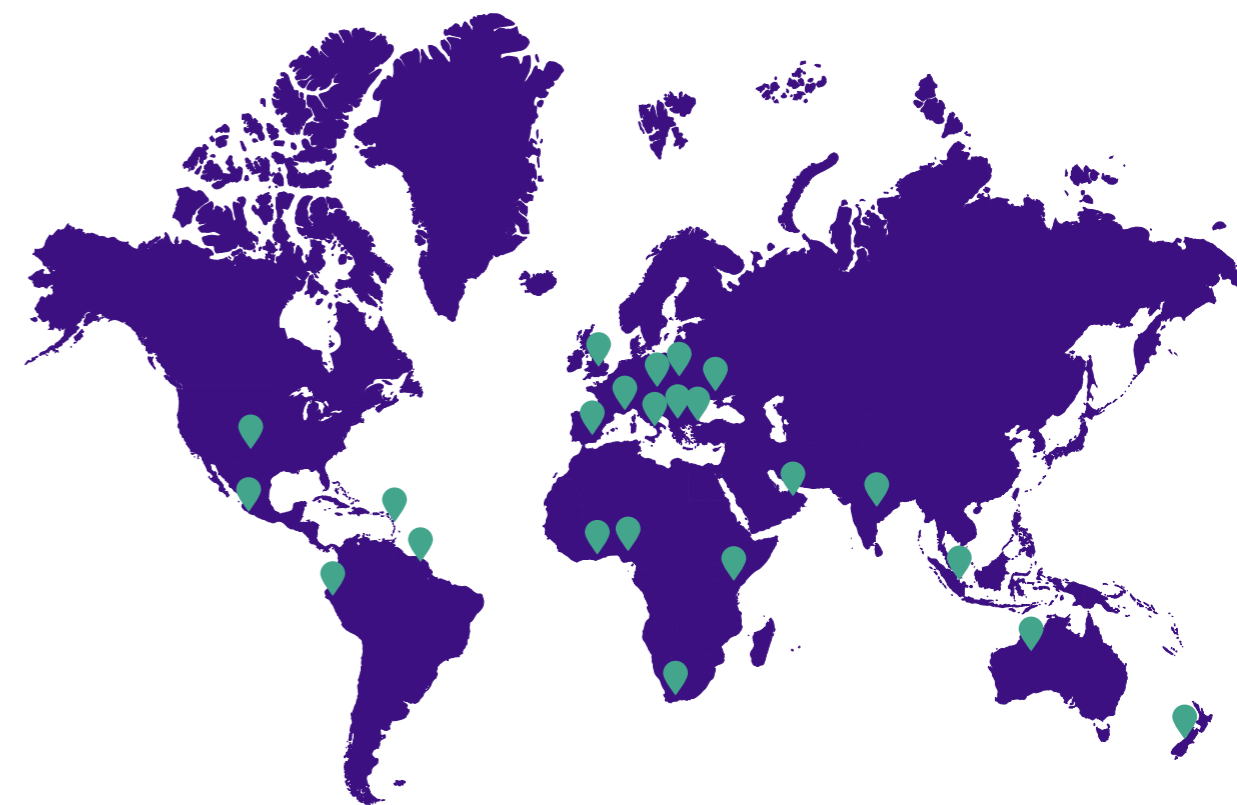
With ALWIN and our connected systems, you get multi-layered protection: encrypted communication, secure authentication, and real-time monitoring. Every lock, every access point, every piece of data – protected by design.

By combining physical security with advanced cybersecurity, you get one integrated ecosystem. Complete visibility. Strong protection. Whether you're managing a remote site or a global network, your infrastructure stays compliant, resilient, and under control.

Cybersecurity with ALCEA means more than defending against today's risks. It's about keeping your operations uninterrupted tomorrow – so you can focus on what matters most.

## Let's get started

Comprehensive support is provided through our sales and service network, regional partners, as well as certified competence centers.



### industries



Telecom



Transportation



Mining



Energy



Water



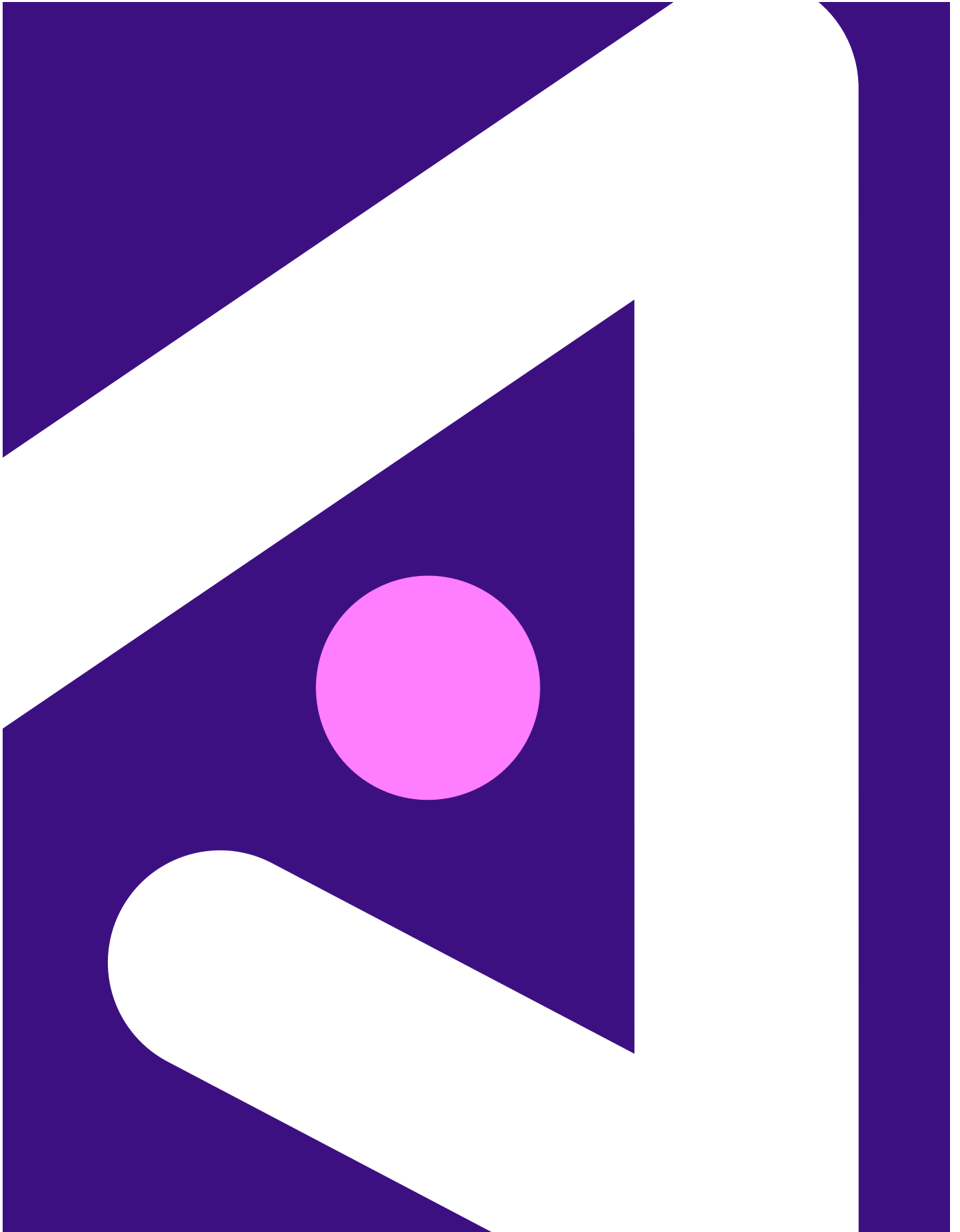
Oil and Gas

### contact us

Whatever service, support, or training your critical infrastructure organization is looking for, please do not hesitate to contact us. With our extensive network of professionals, expertise, and customized solutions, we take care of your needs flexibly, swiftly, and easily.



[alceaglobal.com/en/contact](https://alceaglobal.com/en/contact)



ALCEA specializes in protecting critical infrastructure globally, including energy, water, telecom, transportation, mining, oil, and gas. We provide comprehensive security solutions tailored to your unique needs, from access control and intrusion detection to key and video management. Our experienced specialists deliver customized, digitalized solutions that enhance efficiency, ensure compliance, and offer peace of mind.

© 2026 ALCEA/ASSA ABLOY AB. All rights reserved. This publication is for informational purposes only, without representation or warranty of any kind and the details provided herein are subject to change without advance notice.



[alceaglobal.com](https://alceaglobal.com)